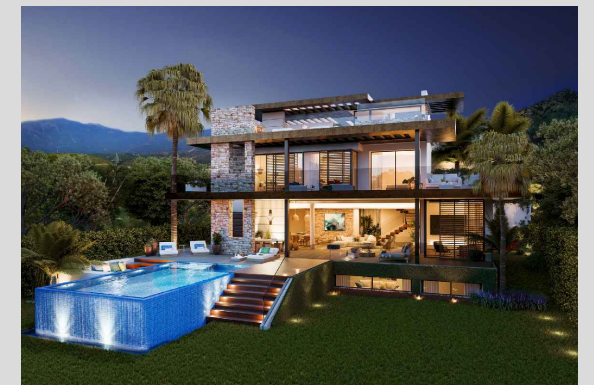


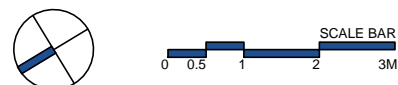
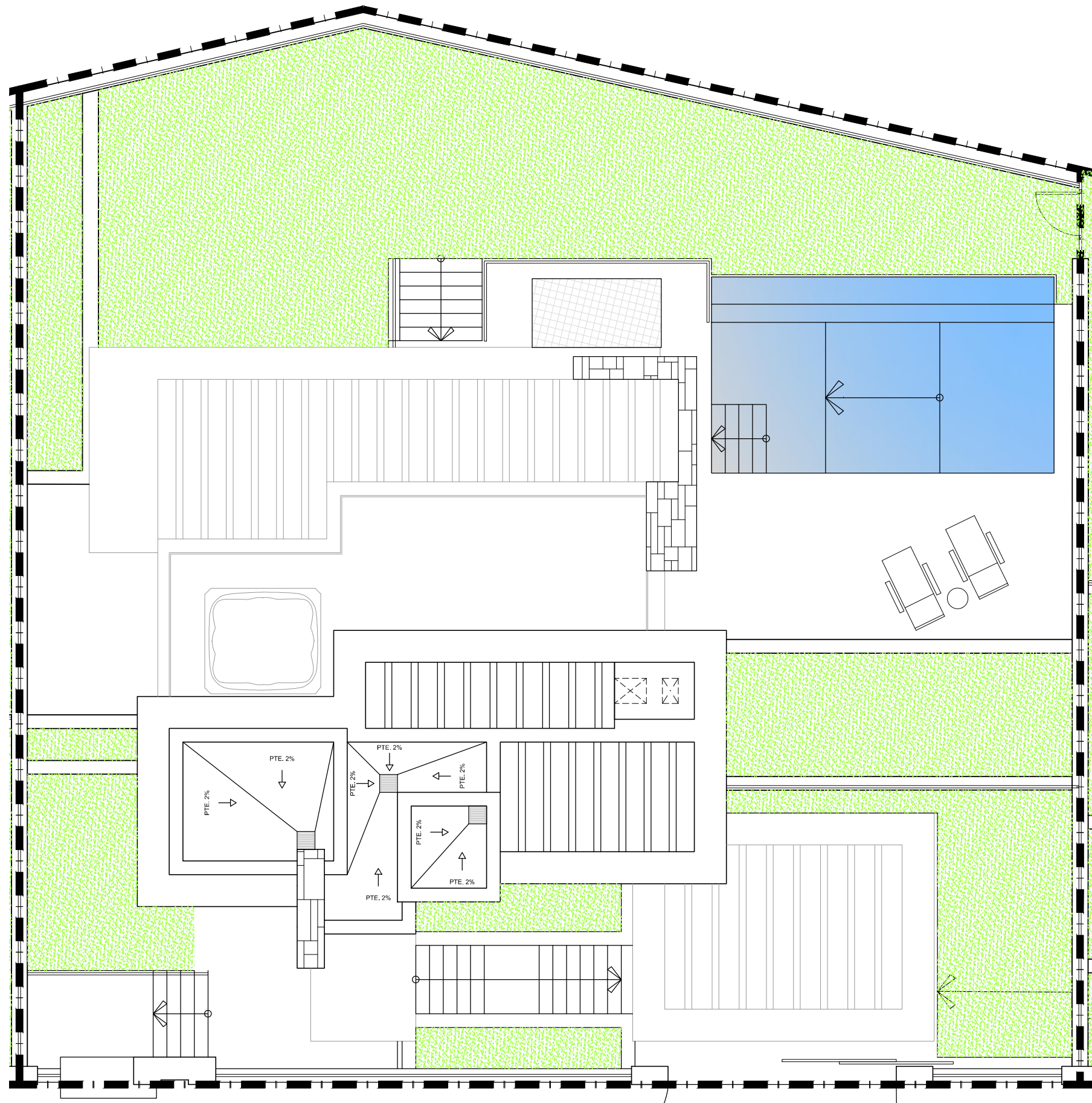
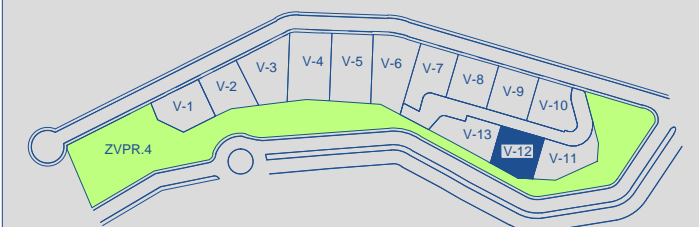
VILLA 12 Site Plan



APPROXIMATE AREAS	M ²
Basement built area	132,98
Ground floor built area	196,83
First floor built area	146,33
Solarium built area	92,45
Parking area	35,94
Pool area	32,22
Total	636,75

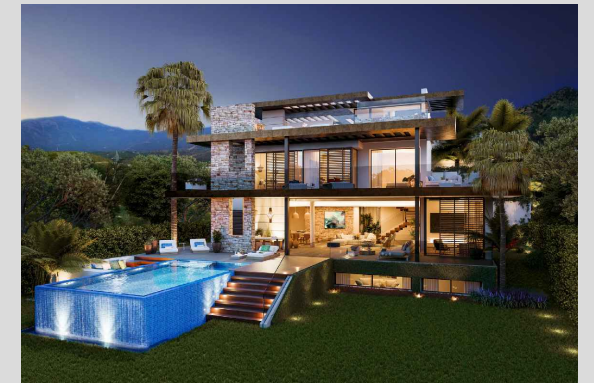
Plot 12 area	512,97
Community green area	5.388,69
Total useful area	300,32

SITE PLAN



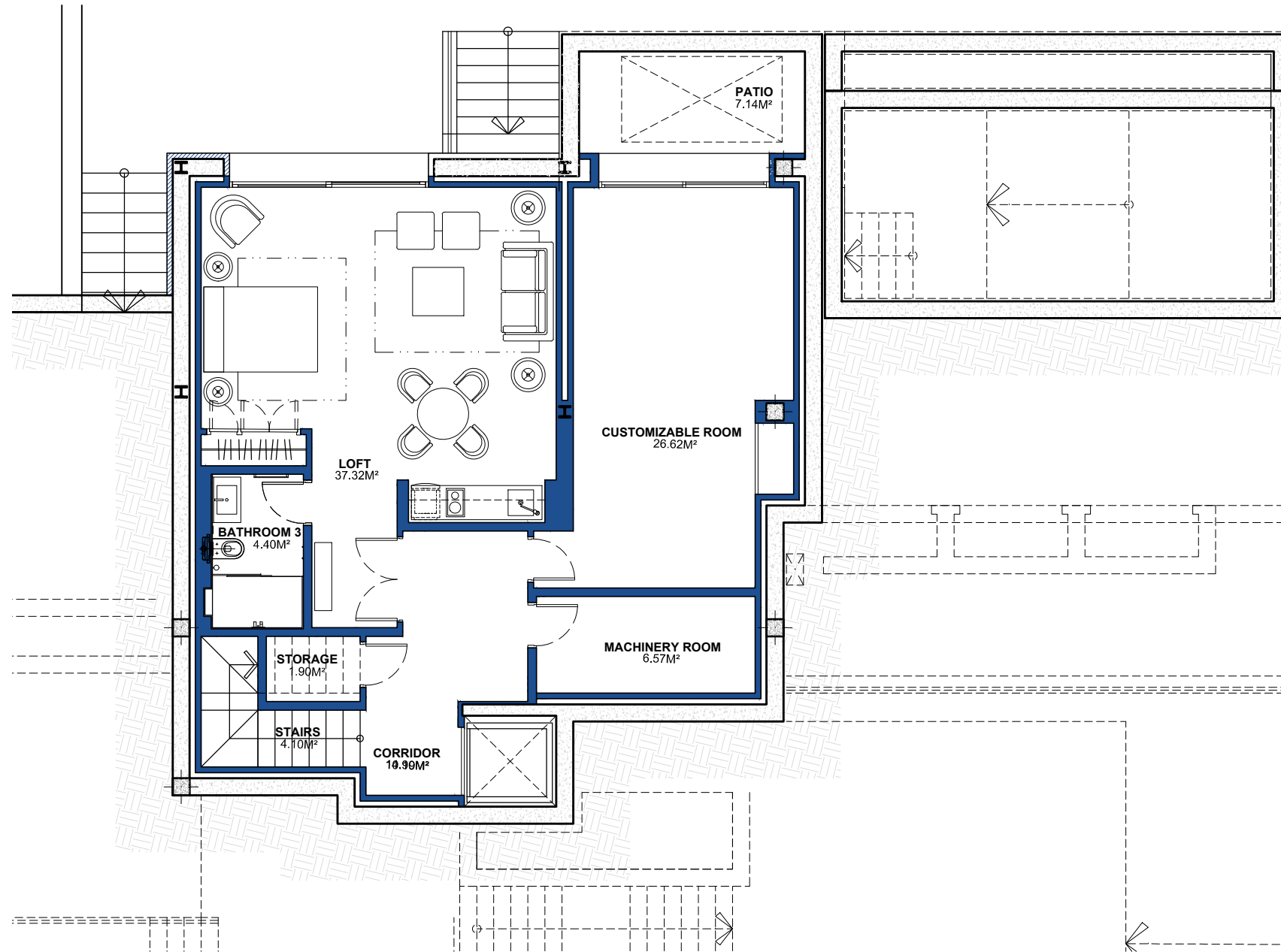
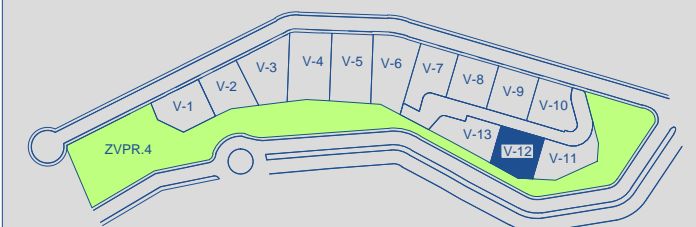
These images are not contractual but only for illustrative purposes. The images are subject to technical, legal or commercial modifications approved by the project management or the competent authority. The 3D images corresponding to the façades, common elements, and the rest of the spaces are merely indicative and will be subject to verification or modification in the technical projects. The furniture of the 3D images is not included and the equipment of the villas will be indicated in the corresponding building and quality specifications. The energy certification corresponds with the one established in the project in process. All the information and documentation will be provided according to the terms established in the Royal Decree 515/1989 and in the rest of the autonomous or state regulations currently in force that could complement the mentioned decree.

VILLA 12 Basement



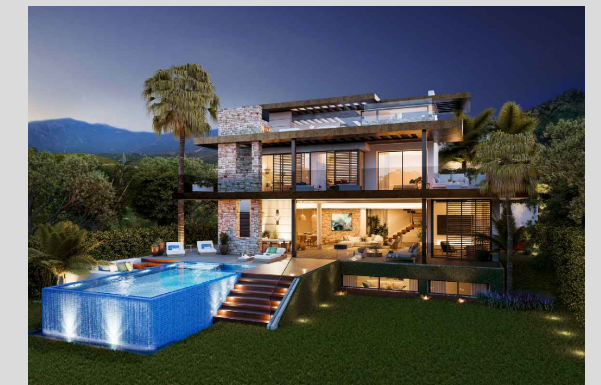
BUILT AREA	132,98 M²
APPROXIMATE USEFUL AREAS	M²
Loft	37,32
Customizable Room	26,62
Bathroom 3	4,40
Other Areas	22,76
Total	91,10

SITE PLAN



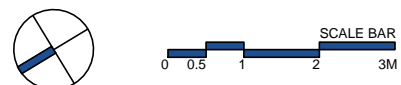
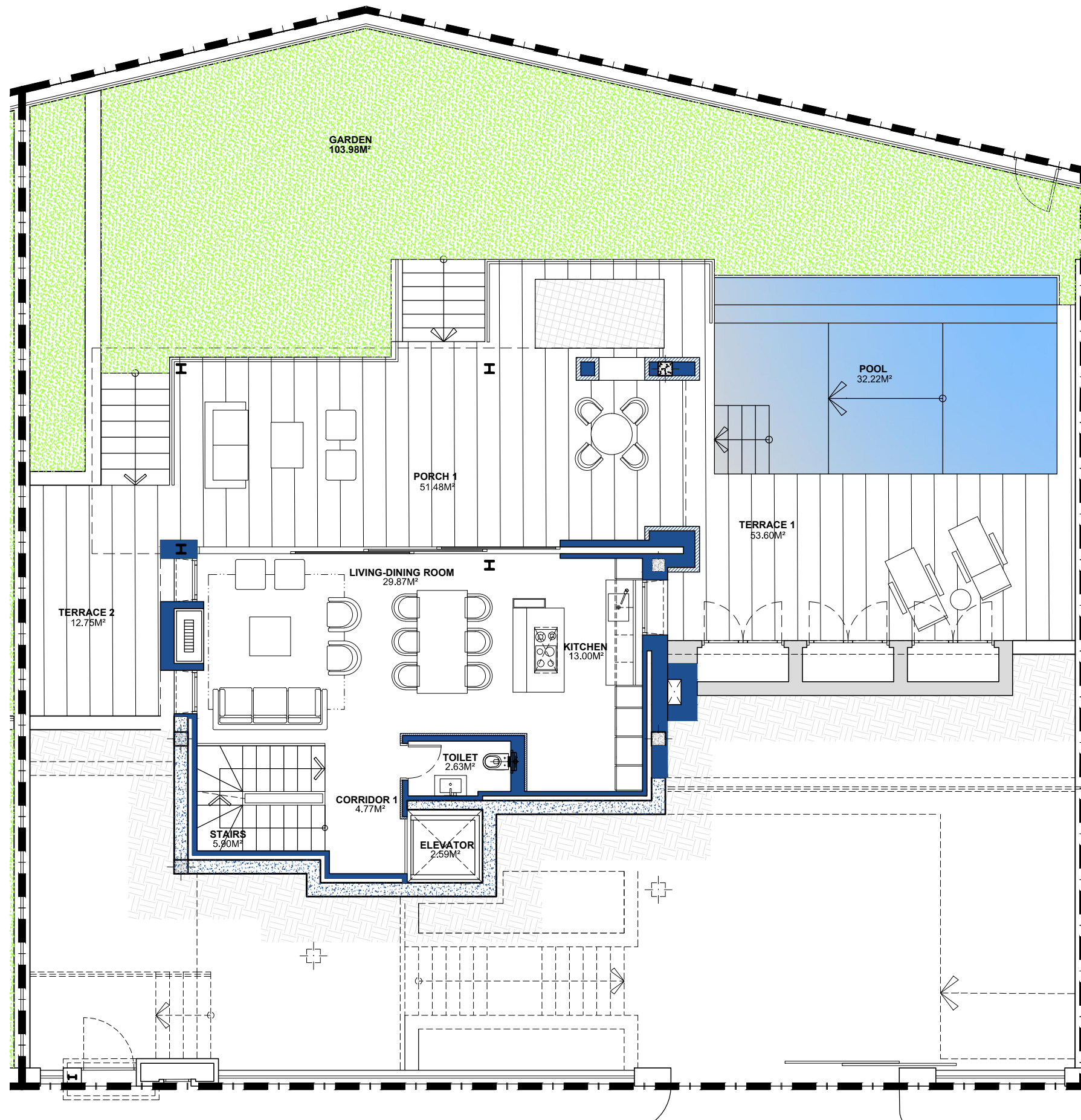
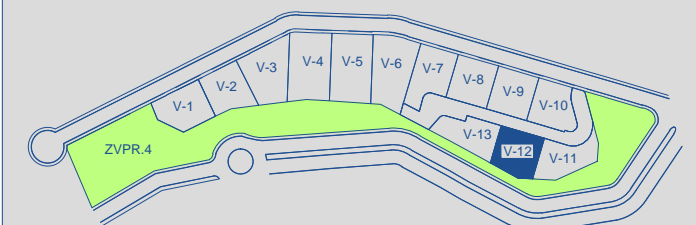
These images are not contractual but only for illustrative purposes. The images are subject to technical, legal or commercial modifications approved by the project management or the competent authority. The 3D images corresponding to the façades, common elements, and the rest of the spaces are merely indicative and will be subject to verification or modification in the technical projects. The furniture of the 3D images is not included and the equipment of the villas will be indicated in the corresponding building and quality specifications. The energy certification corresponds with the one established in the project in process. All the information and documentation will be provided according to the terms established in the Royal Decree 515/1989 and in the rest of the autonomous or state regulations currently in force that could complement the mentioned decree.

VILLA 12 Ground Floor



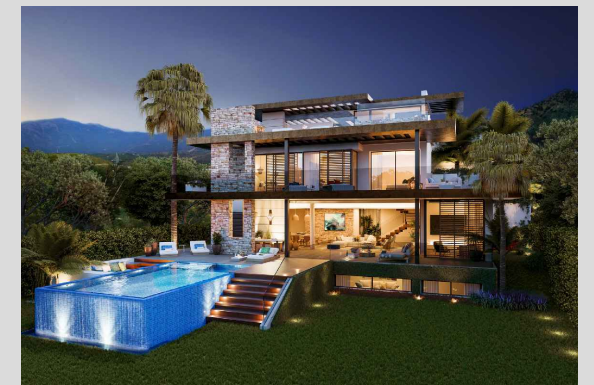
BUILT AREA	196,83 M ²
APPROXIMATE USEFUL AREAS	M ²
Living-Dining Room	29,87
Kitchen	13,00
Toilet	2,63
Other Areas	13,26
Porches and Terraces	105,08
Pool	32,22
Garden	103,98
Total	300,04

SITE PLAN



These images are not contractual but only for illustrative purposes. The images are subject to technical, legal or commercial modifications approved by the project management or the competent authority. The 3D images corresponding to the façades, common elements, and the rest of the spaces are merely indicative and will be subject to verification or modification in the technical projects. The furniture of the 3D images is not included and the equipment of the villas will be indicated in the corresponding building and quality specifications. The energy certification corresponds with the one established in the project in process. All the information and documentation will be provided according to the terms established in the Royal Decree 515/1989 and in the rest of the autonomous or state regulations currently in force that could complement the mentioned decree.

VILLA 12 First Floor

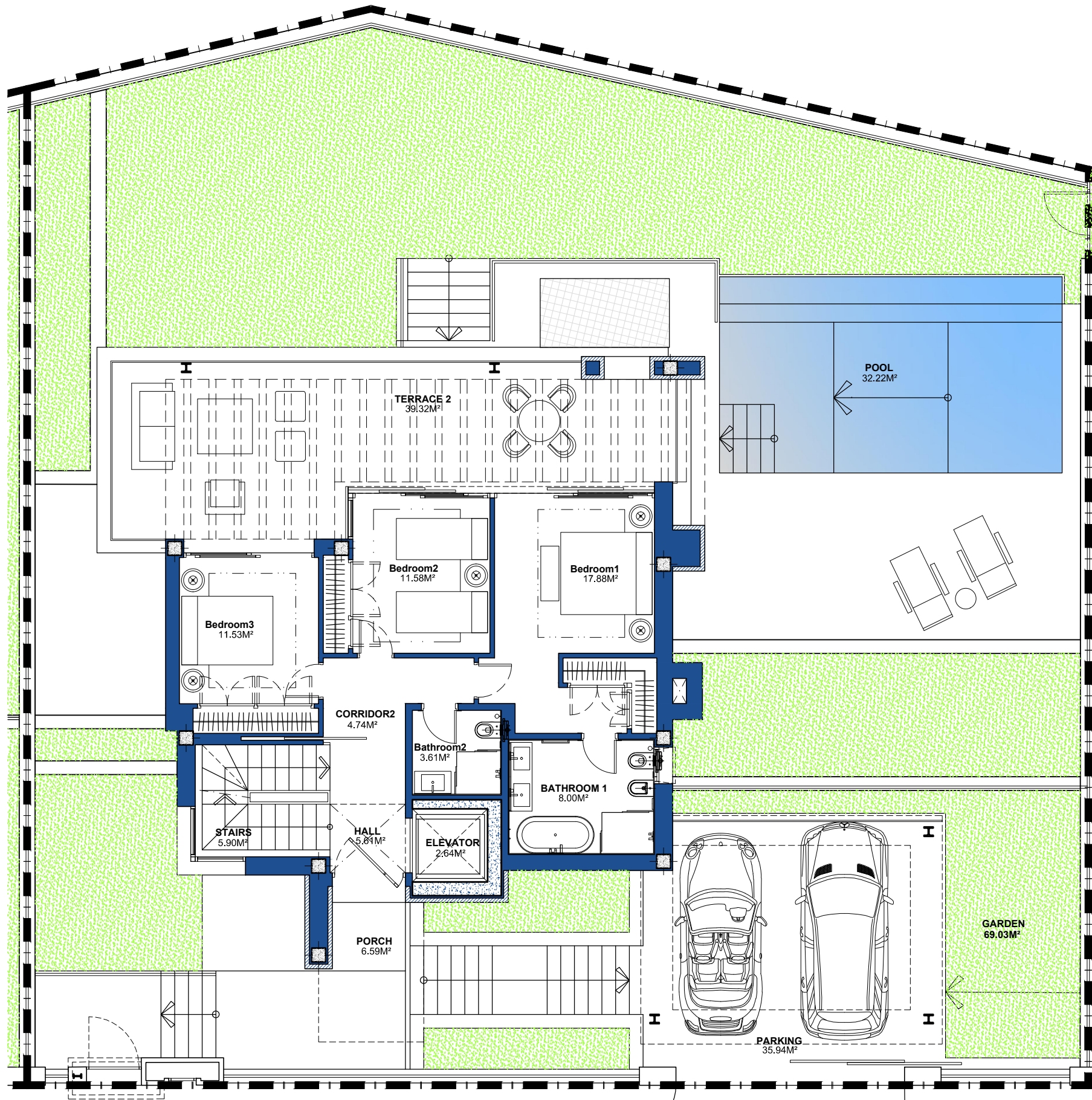
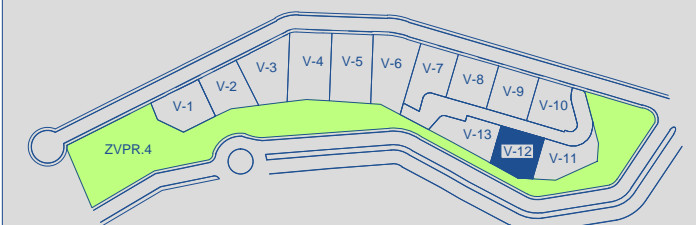


BUILT AREA 146,33 M²

APPROXIMATE USEFUL AREAS M²

Bedroom 1	17,88
Bedroom 2	11,58
Bedroom 3	11,53
Bathroom 1	8,00
Bathroom 2	3,61
Other Areas	18,84
Porches and Terraces	45,91
Total	117,35
Parking	35,94
Garden	69,03
Total	222,32

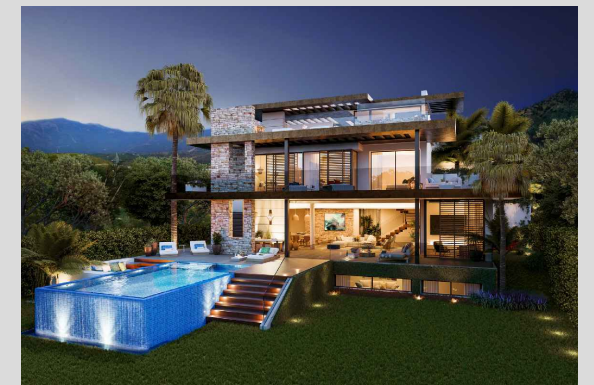
SITE PLAN



SCALE BAR
0 0.5 1 2 3M

These images are not contractual but only for illustrative purposes. The images are subject to technical, legal or commercial modifications approved by the project management or the competent authority. The 3D images corresponding to the façades, common elements, and the rest of the spaces are merely indicative and will be subject to verification or modification in the technical projects. The furniture of the 3D images is not included and the equipment of the villas will be indicated in the corresponding building and quality specifications. The energy certification corresponds with the one established in the project in process. All the information and documentation will be provided according to the terms established in the Royal Decree 515/1989 and in the rest of the autonomous or state regulations currently in force that could complement the mentioned decree.

VILLA 12 Solarium

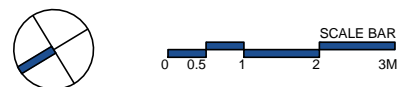
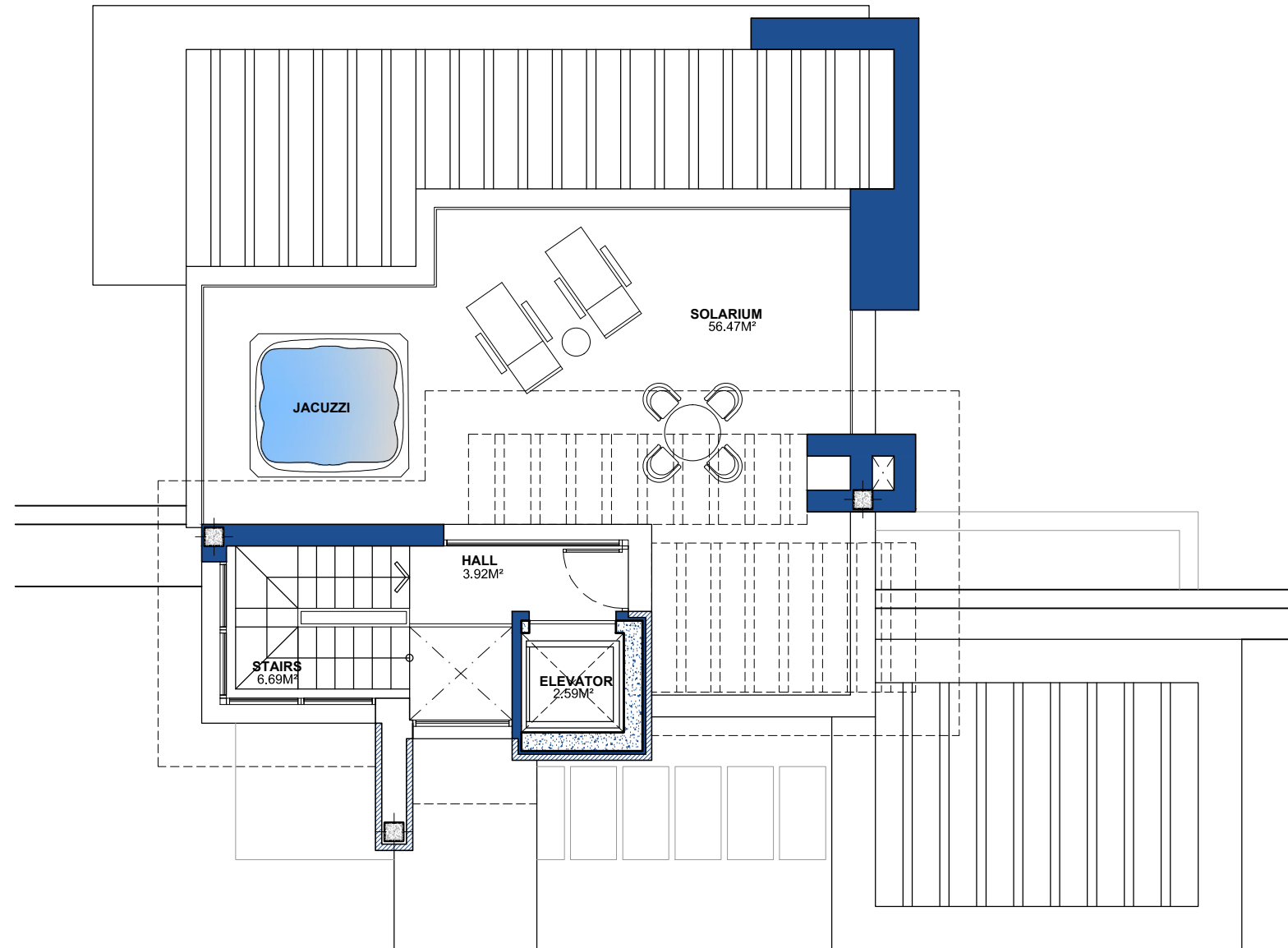
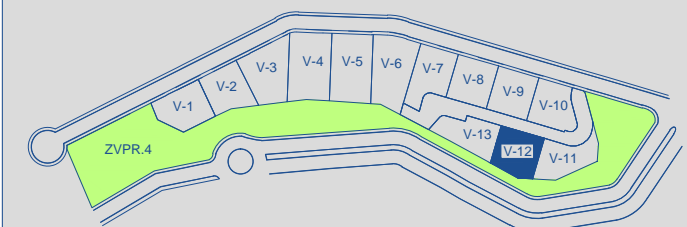


BUILT AREA 92,45 M²

APPROXIMATE USEFUL AREAS M²

Hall	3,92
Other Areas	9,28
Porches and Terraces	56,47
Total	69,67

SITE PLAN 



These images are not contractual but only for illustrative purposes. The images are subject to technical, legal or commercial modifications approved by the project Management or the competent authority. The 3D images corresponding to the façades, common elements, and the rest of the spaces are merely indicative and will be subject to verification or modification in the technical projects. The furniture of the 3D images is not included and the equipment of the villas will be indicated in the corresponding building and quality specifications. The energy certification corresponds with the one established in the project in process. All the information and documentation will be provided according to the terms established in the Royal Decree 515/1989 and in the rest of the autonomous or state regulations currently in force that could complement the mentioned decree.